

A white seismogram graphic on a dark blue background, showing a series of peaks and troughs of varying amplitudes, representing seismic activity. It starts from the left edge and ends at the start of the main title text.

EARTHQUAKE SAFETY PROTOCOLS

University of Crete

PREPAREDNESS OVER PANIC

PROTECT



**DROP,
COVER,
HOLD ON**

During the shaking.

ASSESS



**Hazards and
immediate threats.**

EVACUATE



**After the
shaking stops.**

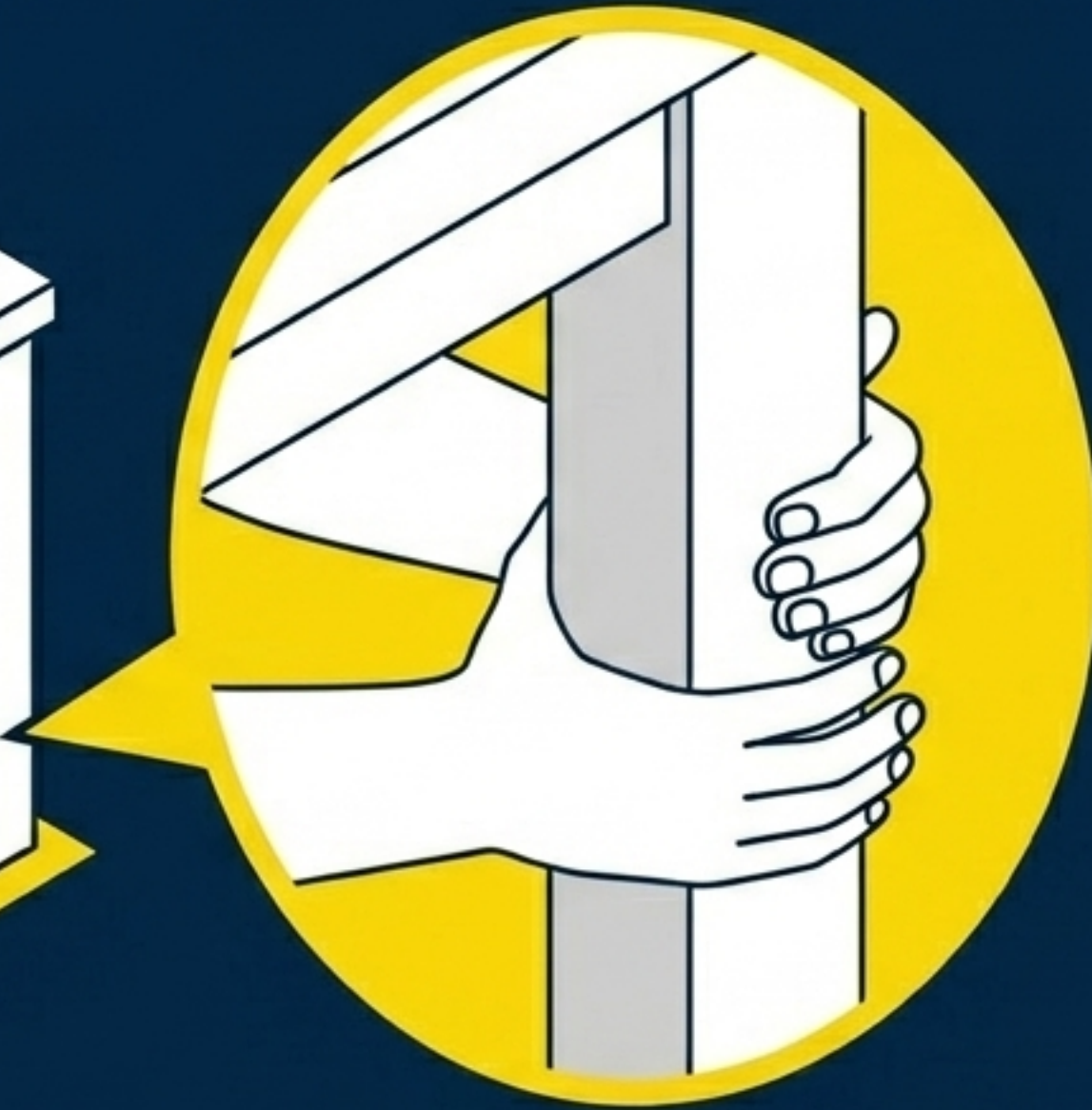
**SURVIVAL RELIES ON KNOWING EXACTLY WHAT
TO DO IN THESE THREE DISTINCT PHASES.**

DO NOT ATTEMPT TO EXIT THE BUILDING



**DURING THE SHAKING, DO NOT MOVE FROM YOUR LOCATION.
MAINTAIN STRICT COMPOSURE. DO NOT RUN.**

THE PRIMARY PROTECTION PROTOCOL

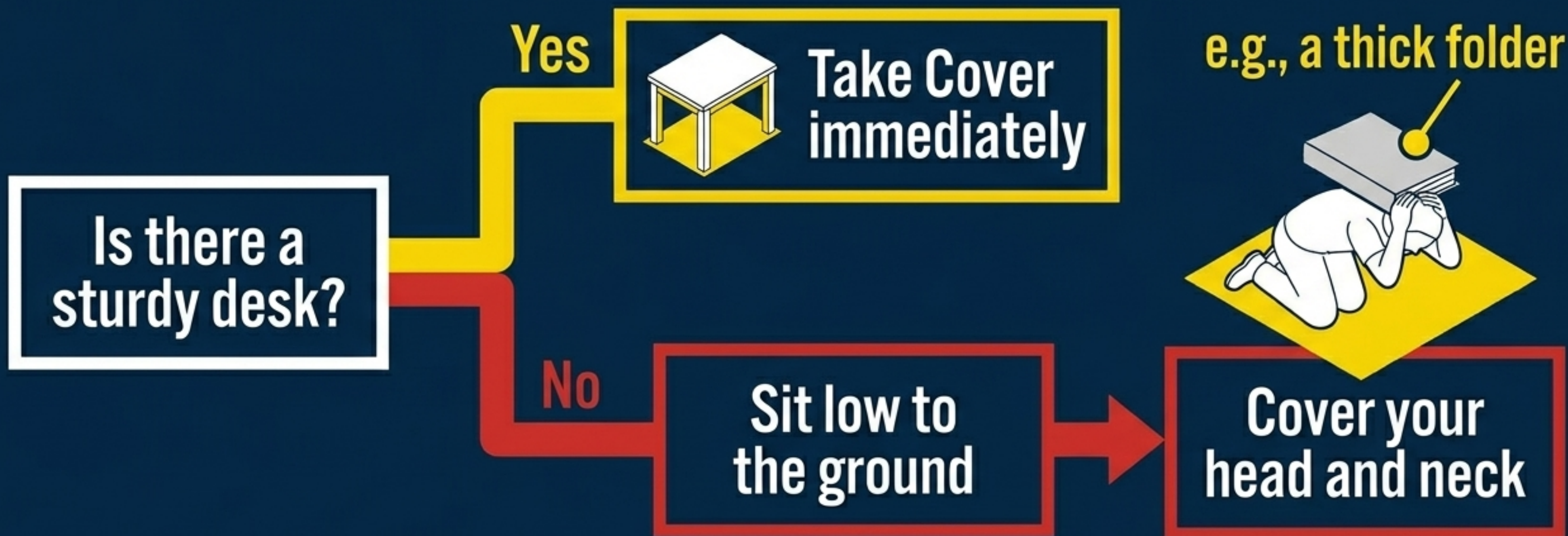


DROP TO THE FLOOR.

TAKE COVER UNDER A STURDY DESK OR TABLE.

HOLD ON TIGHT TO THE INSIDE LEGS OF THE FURNITURE SO IT DOES NOT SLIDE AWAY.

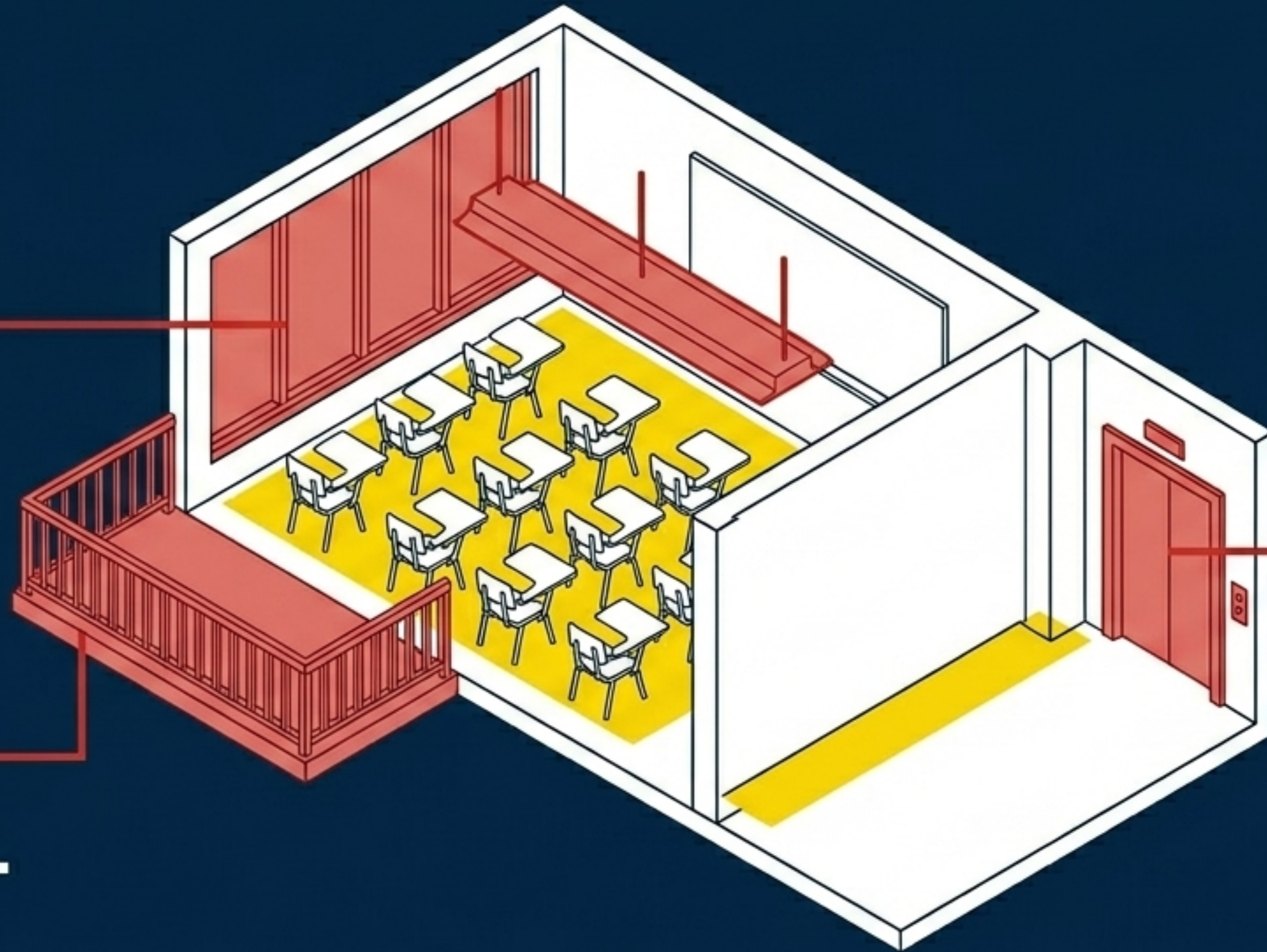
ADAPTIVE PROTECTION WHEN FURNITURE IS UNAVAILABLE



IDENTIFY IMMEDIATE SPATIAL HAZARDS

Stay away from all glass and heavy objects.

Do not step onto balconies.



Never use elevators.

OVERRIDING DANGEROUS INSTINCTS

THE INSTINCT

THE UoC PROTOCOL

✗ Run outside immediately.

✓ Shelter in place until shaking stops.

✗ Take the elevator for a fast escape.

✓ Use only the stairs.

✗ Check the balcony for damage.

✓ Stay strictly indoors.

✗ Light a match or lighter to see in the dark.

✓ Never use open flames due to severe gas leak risks.

ADDRESSING SECONDARY COMPLICATIONS: FIRE AND SMOKE



IF YOU DETECT SMOKE OR FIRE:

**IMMEDIATELY ACTIVATE THE
MANUAL FIRE ALARM IF IT IS NOT
ALREADY RINGING.**

**DO NOT ASSUME SOMEONE ELSE
HAS TRIGGERED THE SYSTEM.**

CRITICAL EMERGENCY COMMUNICATIONS

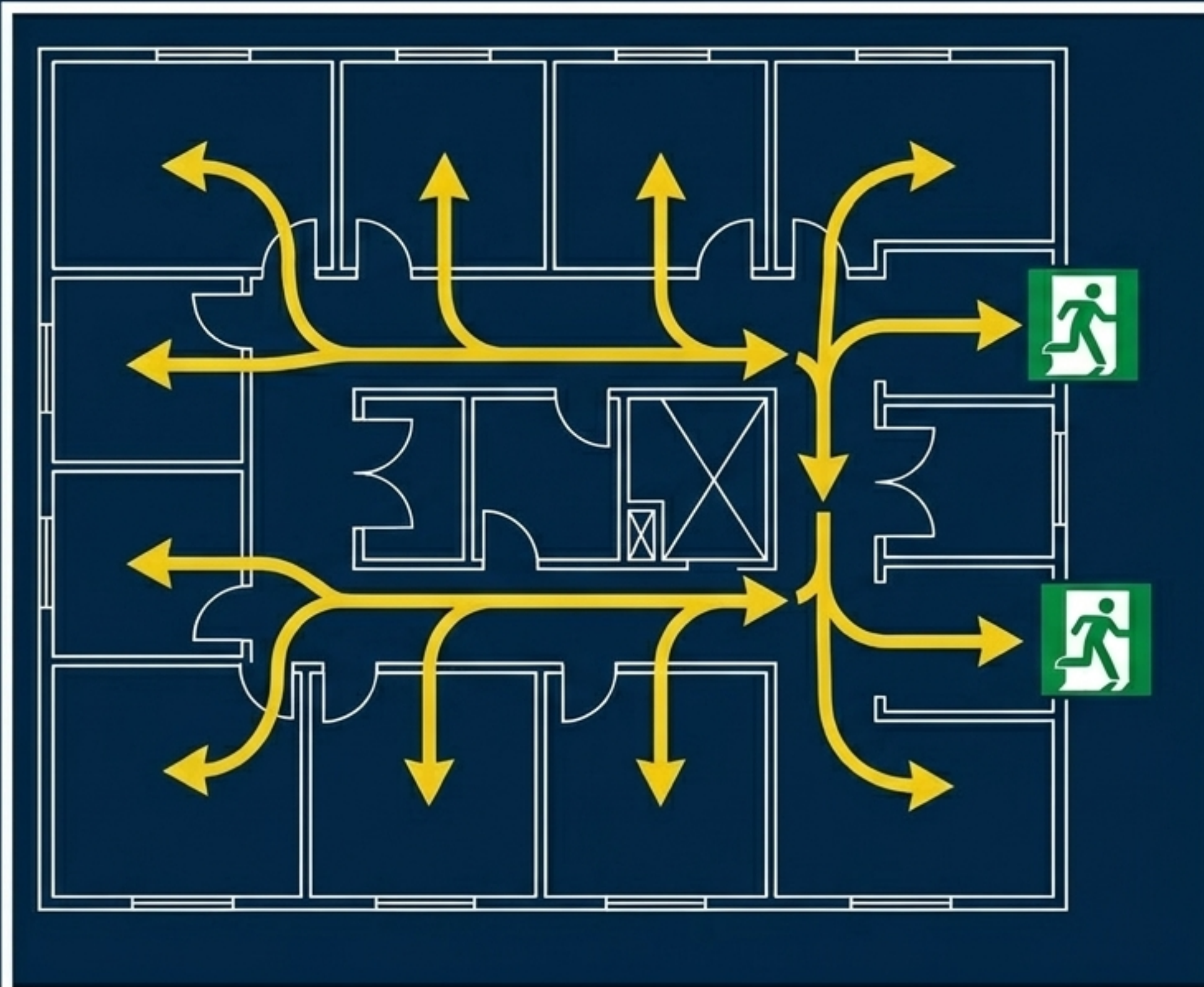
199

FIRE DEPARTMENT

166

AMBULANCE (EKAB) — FOR SEVERE INJURIES ONLY

EXECUTING AN ORDERLY EVACUATION



WAIT FOR THE SHAKING TO COMPLETELY STOP.

FOLLOW ALL EVACUATION SIGNS AND EMERGENCY EXIT ROUTES.

COMPLY IMMEDIATELY WITH INSTRUCTIONS FROM UNIVERSITY STAFF AND EMERGENCY PERSONNEL.

THE UNIVERSITY ASSEMBLY POINT



- **MOVE DIRECTLY TO THE PRE-DEFINED UNIVERSITY ASSEMBLY POINT.**
- **REMAIN ENTIRELY OUTDOORS.**
- **STAY WELL OUTSIDE THE DANGER RADIUS OF ALL BUILDINGS AND STRUCTURES.**

THE MASTER SURVIVAL PROTOCOL

DURING
(Protect)



**Drop, Cover,
Hold inside
legs.**



**Avoid all
glass and
windows.**



**Do not
attempt to
exit.**

ASSESS
(Hazards)



**Do not use
open flames.**



**Activate
manual fire
alarm if
needed.**



**Call 199 or
166 for severe
emergencies.**

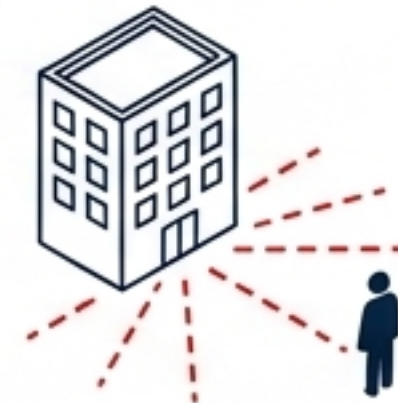
AFTER
(Evacuate)



**Exit calmly
using stairs
only.**



**Move to the
designated
Assembly
Point.**



**Stay clear
of building
exteriors.**

**CALM IS CONTAGIOUS.
SAFETY IS COLLECTIVE.**

